

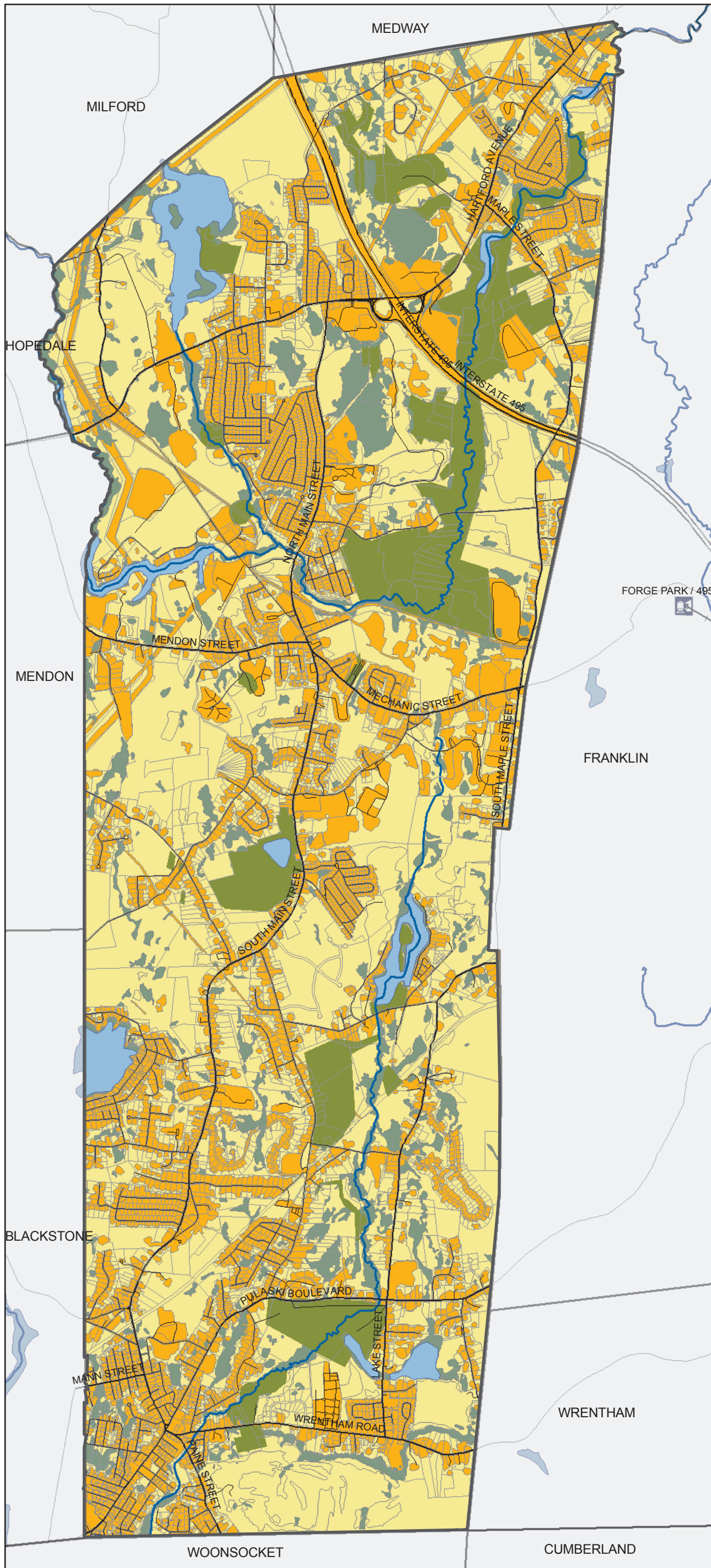
# Bellingham Housing: Land Use Development Status

**DRAFT**

November 12, 2009

Location:

G:\Projects10\BellinghamHousing



## 2005 Land Use

- Developed
- Undeveloped Upland
- Undevelopable
- Roads
- Train tracks
- Rivers
- Water
- Permanently protected land
- Parcels 2008

0 2,000 4,000 Feet

