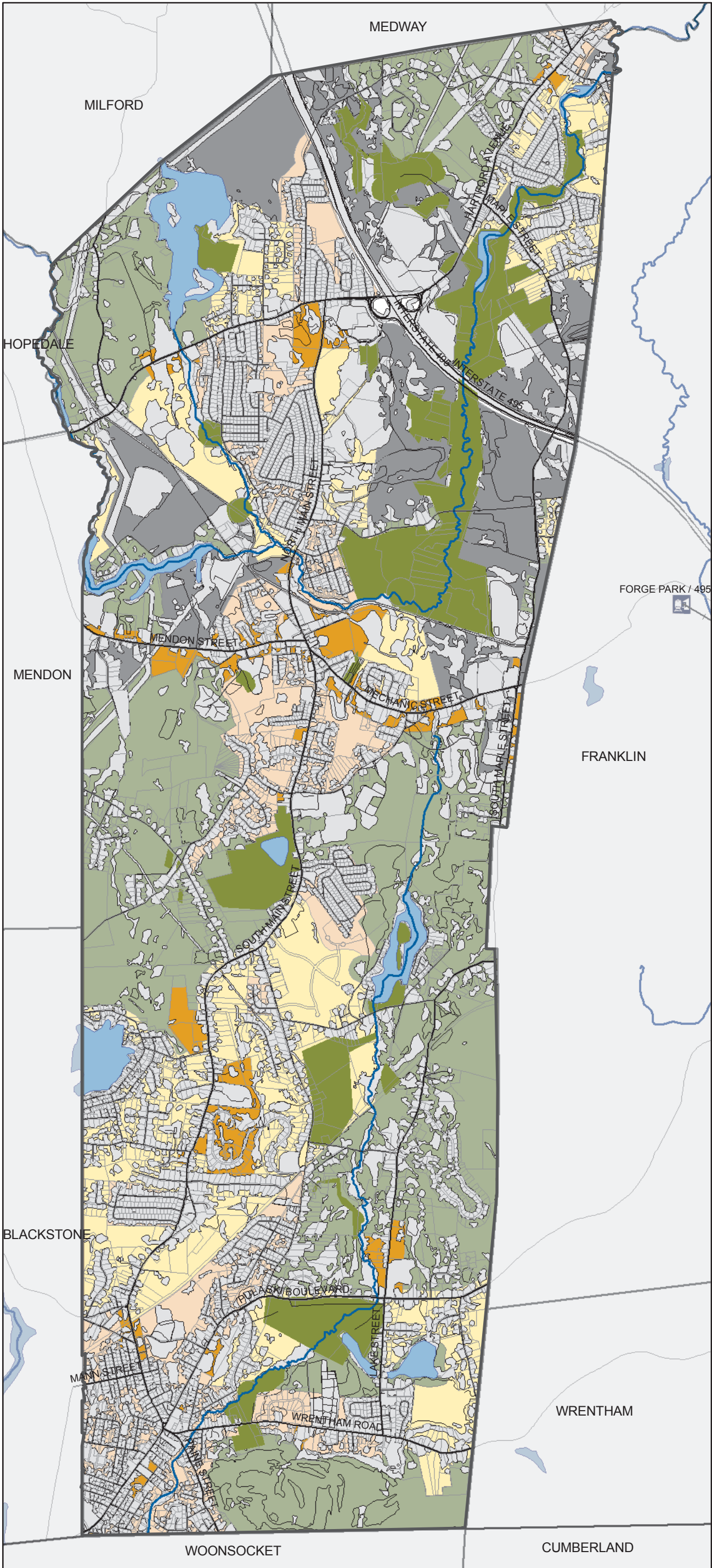


Bellingham Housing: Zoning for Unprotected Undeveloped Land



DRAFT

November 12, 2009

Location:
G:\Projects10\BellinghamHousing



Bellingham Zoning 1999

- Business
- Industrial
- R1-Agriculture
- R2-Suburban
- R3 - Residential
- Roads
- Train tracks
- Rivers
- Water
- Developed land and undevelopable land ("undevelopable land" includes land uses such as cemetery and utility areas)
- Permanently protected land
- Parcels 2008

0 2,000 4,000 Feet

