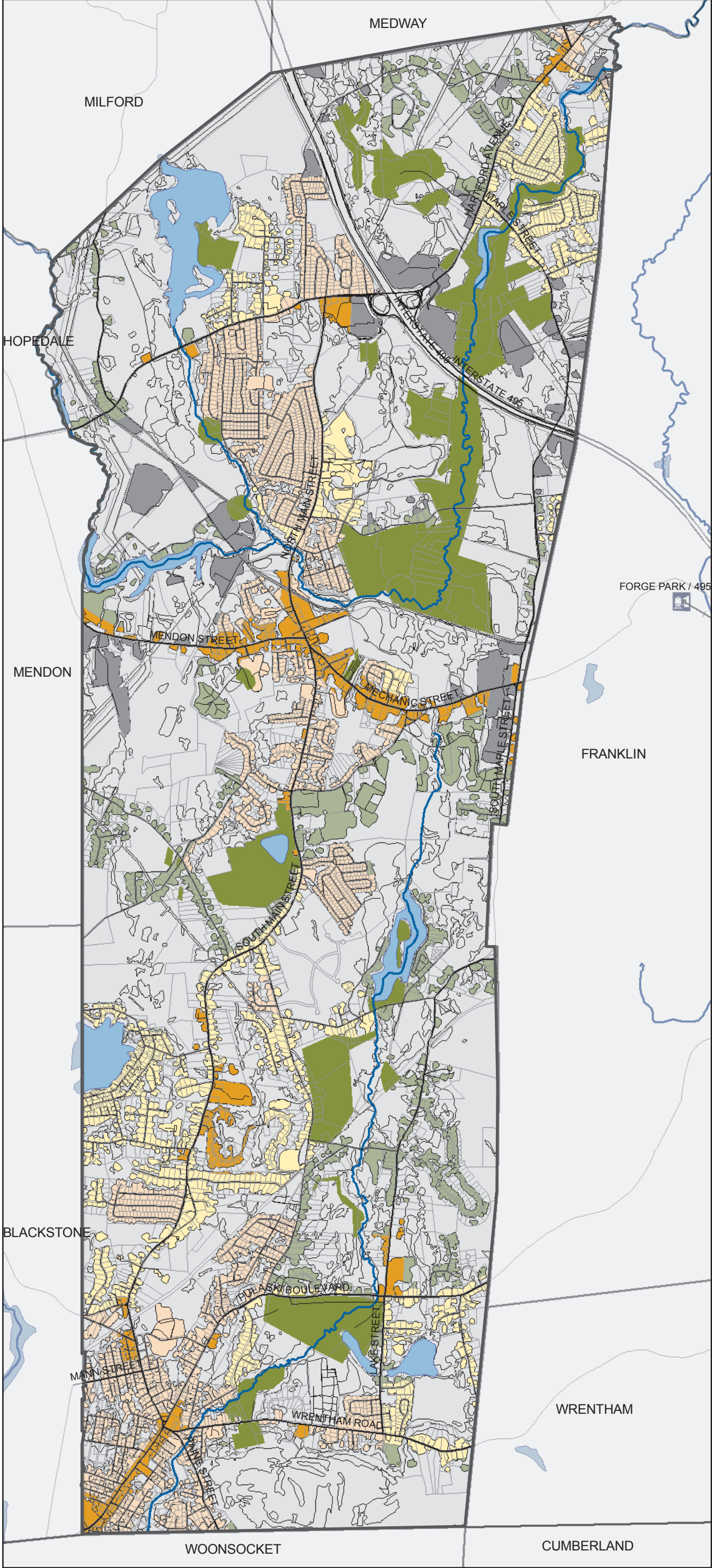


# Bellingham Housing: Zoning for Already Developed Land

**DRAFT**

November 12, 2009  
 Location:  
 G:\Projects10\BellinghamHousing



**Bellingham Zoning 1999**

- Business
- Industrial
- R1-Agriculture
- R2-Suburban
- R3 - Residential
- Roads
- Train tracks
- Rivers
- Water
- Undeveloped land and undevelopable land ("undevelopable land" includes land uses such as cemetery and utility areas)
- Permanently protected land
- Parcels 2008

0 2,000 4,000 Feet

