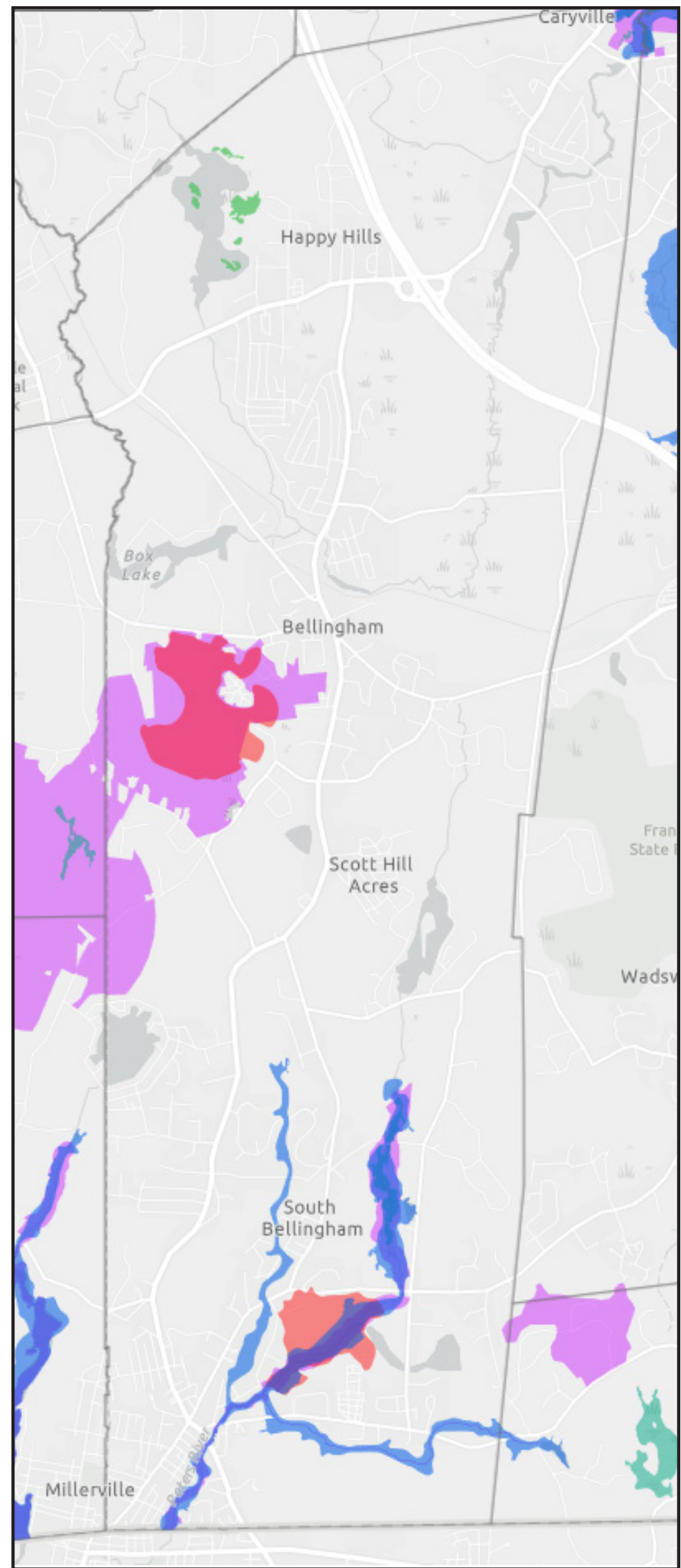


**LARGEST CORE HABITAT IN BELLINGHAM IS THE DEVELOPMENT AREA**



**BIO MAP I** RELEASED DECEMBER 2022





# CURRENT LAND I BLACKSTONE & NORTH STREET













**BY-LAW 240-25 CRITERIA**

- Traffic flow and safety;
- Adequacy of utilities and other public services;
- Neighborhood character and social structures;
- Qualities of the natural environment;
- Potential fiscal impact.

**BY-LAW 240-108 DECISION**

- Impact on the natural environment, especially on ground and surface water quality and level.
- Impacts on traffic safety and congestion, adequacy of water service, and need for school facilities.
- Impacts on the visual environment through preservation or displacement of visual assets, and consistency with existing development in area.